

Cover caps

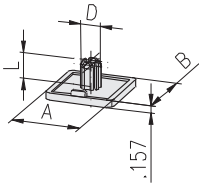


**Application**  
Cover caps prevent dirt from entering and avoid lacerations.

**Technical data**  
material: PA-GF  
temperature range: -20°C to +85°C

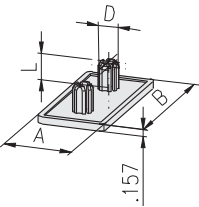
**Comments**  
Before mounting debur core hole

Square



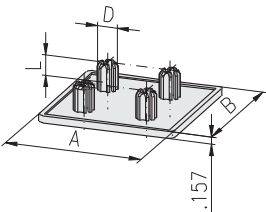
Description	A×B	D	L	Colour	Weight	Product No.
Cover cap	1"×1"	Ø.394	.551	grey	.013 lbs.	2.42.1010010.1
Cover cap	1"×1"	Ø.394	.551	black	.013 lbs.	2.42.1010010.2
Cover cap	1.5"×1.5"	Ø.394	.551	grey	.022 lbs.	2.42.2015015.1
Cover cap	1.5"×1.5"	Ø.394	.551	black	.022 lbs.	2.42.2015015.1

Rectangle



Description	A×B	D	L	Colour	Weight	Product No.
Cover cap	1.5"×3"	Ø.394	.551	grey	.040 lbs.	2.42.2015030.1
Cover cap	1.5"×3"	Ø.394	.551	black	.040 lbs.	2.42.2015030.2

Square



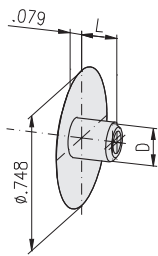
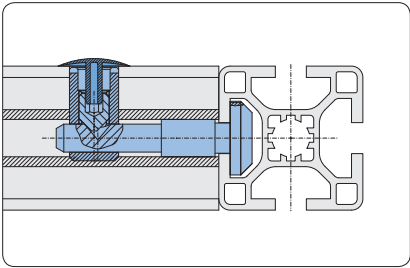
Description	A×B	D	L	Colour	Weight	Product No.
Cover cap	2"×2"	Ø.394	.551	grey	.026 lbs.	2.42.1020020.1
Cover cap	2"×2"	Ø.394	.551	black	.026 lbs.	2.42.1020020.2
Cover cap	3"×3"	Ø.394	.551	grey	.075 lbs.	2.42.2030030.1
Cover cap	3"×3"	Ø.394	.551	black	.075 lbs.	2.42.2030030.2

Cover plugs domed



**Application**  
The cover plug allows the closing of the connector cross bushing bore

**Technical data**  
material: PE



Description	Colour	D	L	Weight	Product No.
Cover plug 1" domed	grey	Ø.169	.177	.002 lbs.	2.42.5110.1
Cover plug 1" domed	black	Ø.169	.177	.002 lbs.	2.42.5110.2
Cover plug 1.5" domed	grey	Ø.169	.433	.002 lbs.	2.42.5115.1
Cover plug 1.5" domed	black	Ø.169	.433	.002 lbs.	2.42.5115.2

Base plates



Fastening of levelling feet



Fastening of castors

Application

Base and transporting plate for profiles without centric core hole



Fastening of eye-bolts

Technical data

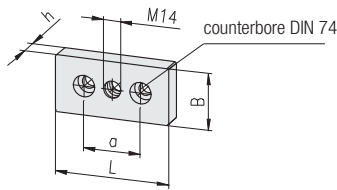
material: aluminium  
strength: F22  
surface: black powder-coated

Accessories

- (↗ *Catalogue, 'The Profile System'*)
- threaded insert
  - cap-screw DIN 912

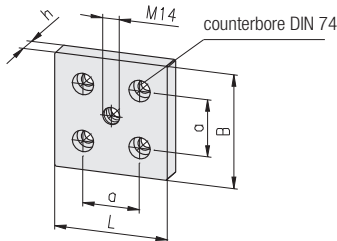
Comments

Counterbore DIN 74 for cap-screw DIN 912



11.5

Description	B×L	DIN 74	h	a	Weight	Product No.
Base plate	1.5"×3"	M14 - Km8	.591	1.5	.048 lbs.	2.47.2015030



11.5

Description	B×L	DIN 74	h	a	Weight	Product No.
Base plate	2"×2"	M14 - Km6	.591	1.0	.044 lbs.	2.47.2020020
Base plate	3"×3"	M14 - Km8	.591	1.5	.106 lbs.	2.47.2030030